

2008 TDXS Field Day General Plan

Organization

- FD Coordinator: Bill [K5WAF]
- FD Deputy Coordinator: Bob [WB5IUU]
- CW Station Captain: tbd
- SSB Station Captain: Buzz [N5UR]
- GOTA Station Captain: tbd
- Satellite Station Captain: Glenn [WB5TUF]
- Solar Power Captain: Bob [WB5IUU]
- XYL Captain: Trish Frink

Dipole Antenna Field

- Treed area with access to both the Pavilion and RV for 40-160 M Dipoles

Generators

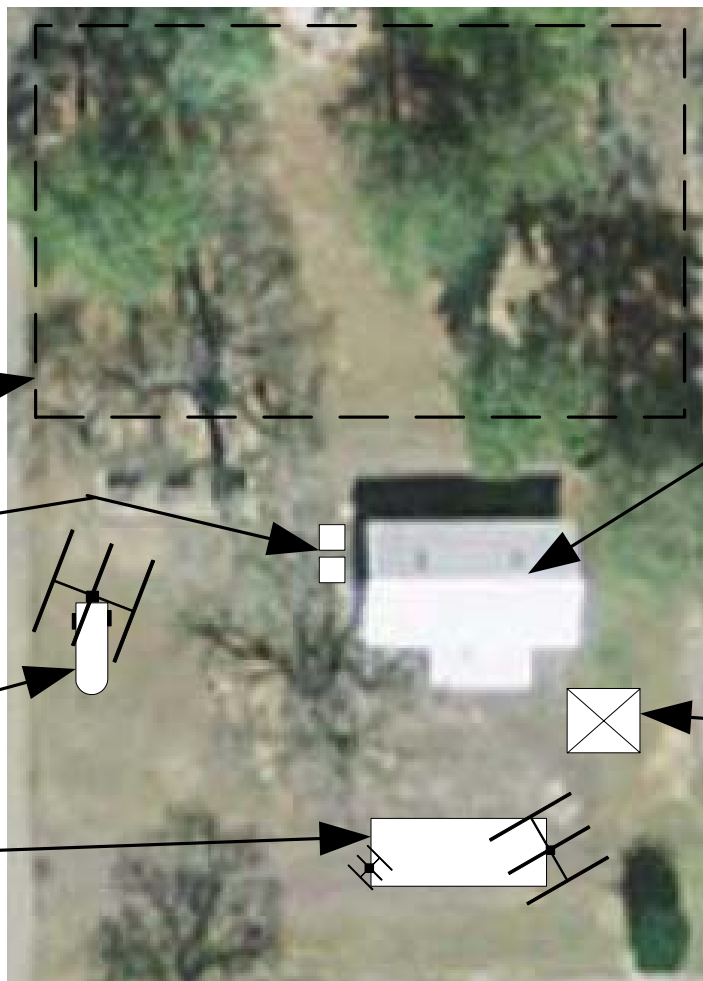
- Location of 2- 5KW Generators – sheltered from open area of the Pavilion for noise control

Trailer Tower

- Location for trailer mounted tower
- Yagi for SSB Station

Topp RV

- Location for Dave Topp's RV with towers for HV and VHF Yagi
- CW and VHF Station will be in the RV



2A [CW, SSB & GOTA]

- Equipment: 3 TS-480HX Transceivers
- Running full 150W limit (vs 100W that we have been limited to in the past)
- Identical station equipment for ease of learning and operating.

Pavilion 2

- The perfect location – a public facility but we will be out of the way – and no apparent line noise!
- Complete cover from the weather
- Complete with lighting, ceiling fans and water/sink
- 4 picnic tables – ideal for our SSB and GOTA operating positions, an information table and general gathering
- Toilet facilities within 200 feet of the Pavilion
- Eating/Barbeque facilities

Tent

- 6 man, REI Habitat 6, tent

Questions?

- Contact
- Bill, K5WAF: 281-455-0417 [C], K5WAF@arrl.net
- Bob, WB5IUU: (936) 321-8649 [H], bmennell@comcast.net

**Mark your calendars, plan to participate, fill a role and help
more to come!**